



**Headquarters**

Kosti Palama 46  
Greece, Athens, Dafni, 17237  
Tel. & Fax: +30 210 38 00 750  
Tel. & Fax: +30 215 56 00 440  
Website: [www.livingprospects.gr](http://www.livingprospects.gr)  
e-mail: [info@livingprospects.gr](mailto:info@livingprospects.gr)

**Representative Office**

Rue du Commerce 123  
Suite 210  
Belgium, Brussels, 1000  
Tel.: +32 2 8955880

Inspiring a **BETTER** world



# Vision

## Vision

To build a **better world** and to **inspire** others to do the same, by developing and applying sustainable projects, aiming at the **financial growth** of our clients and the protection of the **natural environment**.

## Mission

To contribute to the **betterment of our society**. Our way of doing things is **straightforward**: We know the business, we deliver and then come back with more ideas . **Long-term collaboration** is our goal.

## Values

Our values define the way we work . **Commitment** , trust, sense of social responsibility, quality, knowledge and teamwork are our **key ingredients**. They are **non-negotiable**. They **cannot be purchased**.



# Services

We provide services that require specialized expertise and experience in the fields of Development and Environment. We work with public and private bodies in Greece and abroad.

## CONSULTING SERVICES

We provide consulting services to national and international institutions of the private and public sector on issues requiring special expertise and experience. Our services include consulting assistance to institutions and organizations of the narrow and broader public sector (central government, local government, public organizations, etc.), as well as to private entrepreneurs, in order to successfully implement their development/ investment plans.

## ASSESSMENTS - RESEARCH

We implement demanding and specialized environmental assessments and projects, focusing on infrastructures, ports and industrial installations. Further, we plan and implement development studies and surveys in both European co-financed and local/regional/national self financed projects.

## POLICY FORMULATION

We support policy making in the fields of environment and development, by taking into consideration the three pillars of sustainability, namely: economic feasibility; environmental viability; and social desirability and by exploiting the experience and expertise of our members in the aforementioned areas. Particularly, LP forms policies suitable for public and private institutions, after having analysed the state of play and the existing public consultations.

## NETWORKING ACTIVITIES

We support private and public organizations in order to promote their business and expand their networks. Our projects aim to engage targeted audiences and increase potential customers.

## TRAINING - EDUCATION

We design and implement training programs and information activities aiming at the education of private and public institutions on issues related to the environment and sustainable development.



# Specialization

## Inclusive Green Economy

We provide consulting services and implement studies related to sustainable production and consumption, planning policies and assisting academic, research, private and government agencies in national and international projects.



## Climate Change & Energy

We formulate and develop policies to address Climate Change by applying tailored technological methods in order to effectively reduce greenhouse gas emissions and increase the adaptation capacity of a system in climate change.



## Blue Growth

We provide technical consultation, implement studies and surveys, Blue Strategic Plans and support the management of national and international projects in order to adopt sustainable measures which promote Blue Growth, having first considered the local, climatic, oceanographic, cultural, economic and social factors.

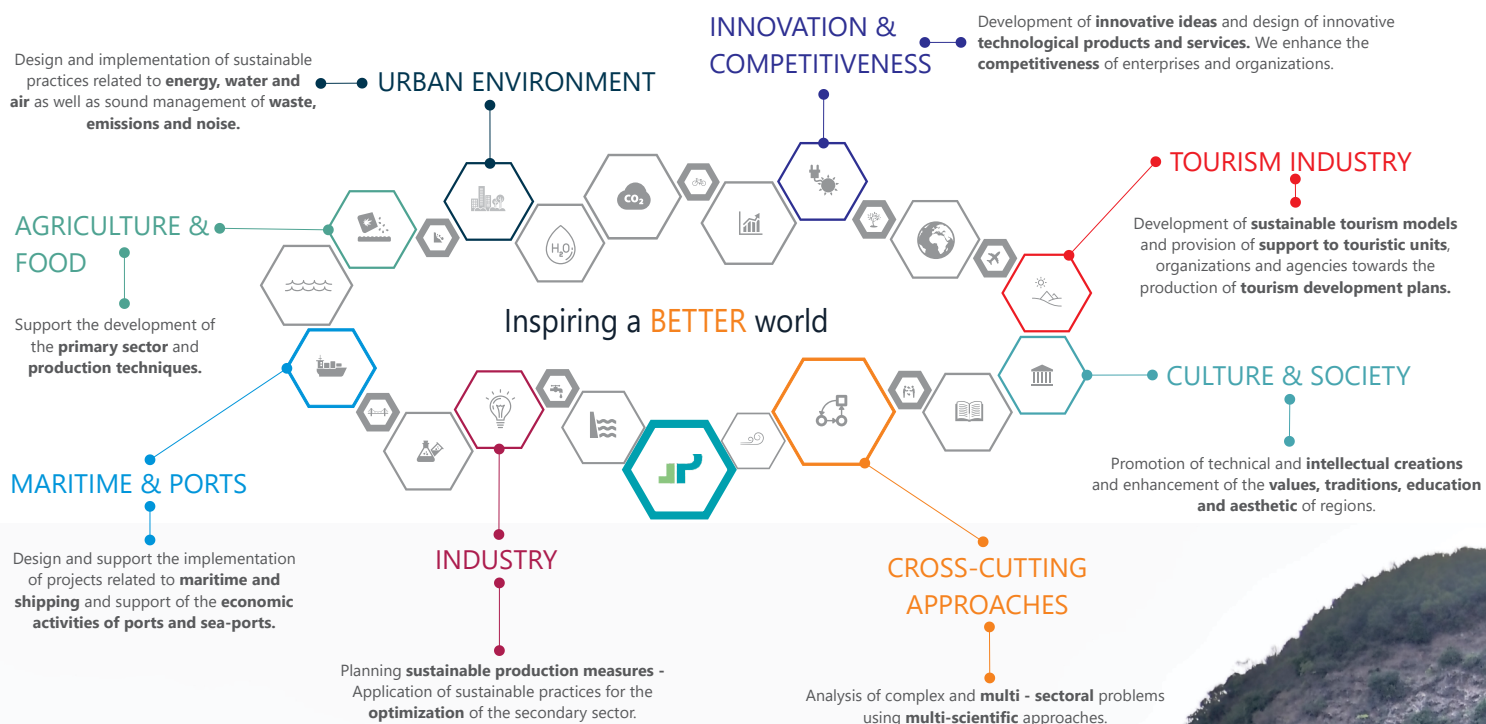


## Investment Promotion

We provide services on issues related to urban planning, tourism, local economy growth and investments. We support private and public organizations in developing and implementing business plans.



# Sectors

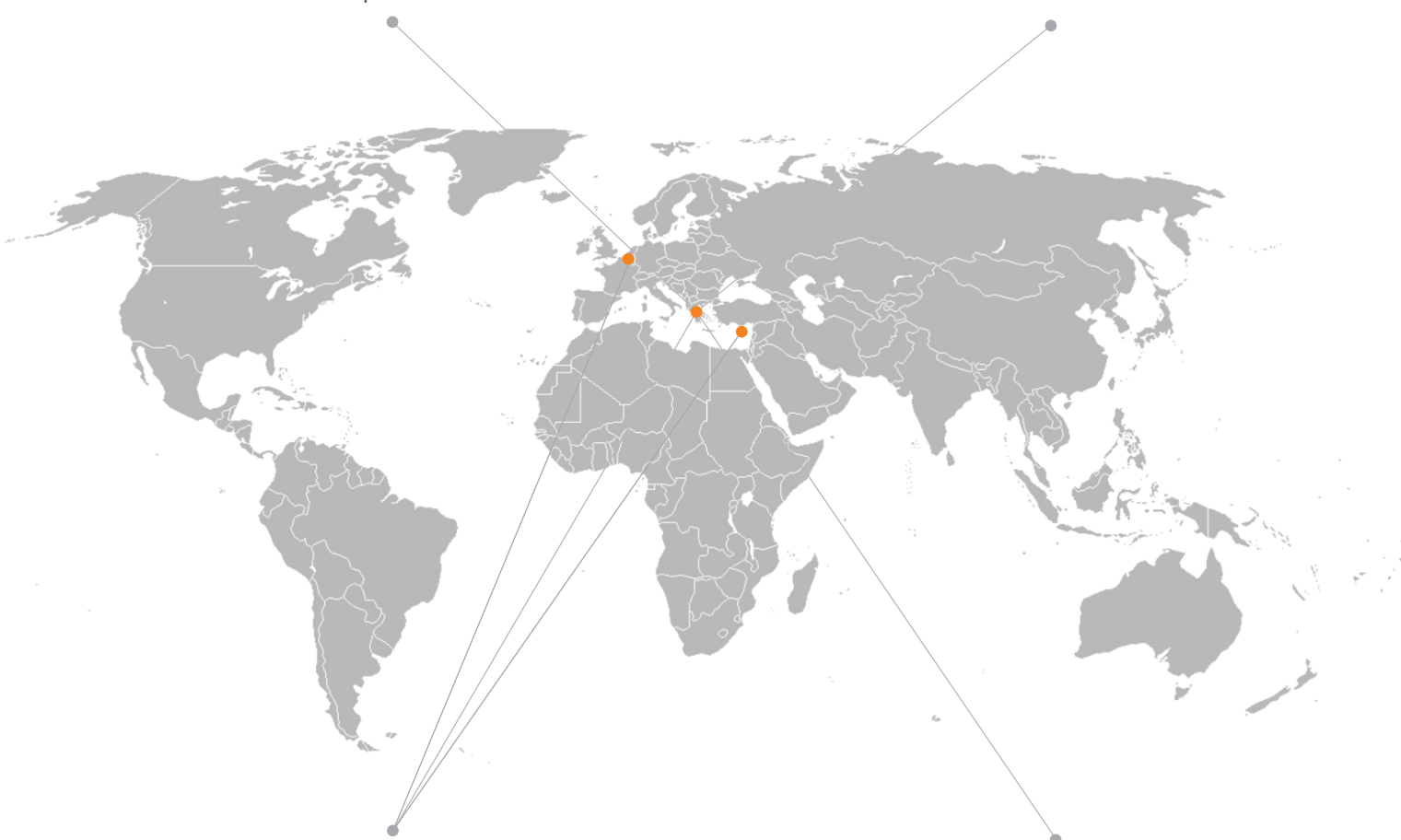




# Network

Network of organizations and institutions  
in 20 European Countries

Network of experts in Europe, Asia and Africa

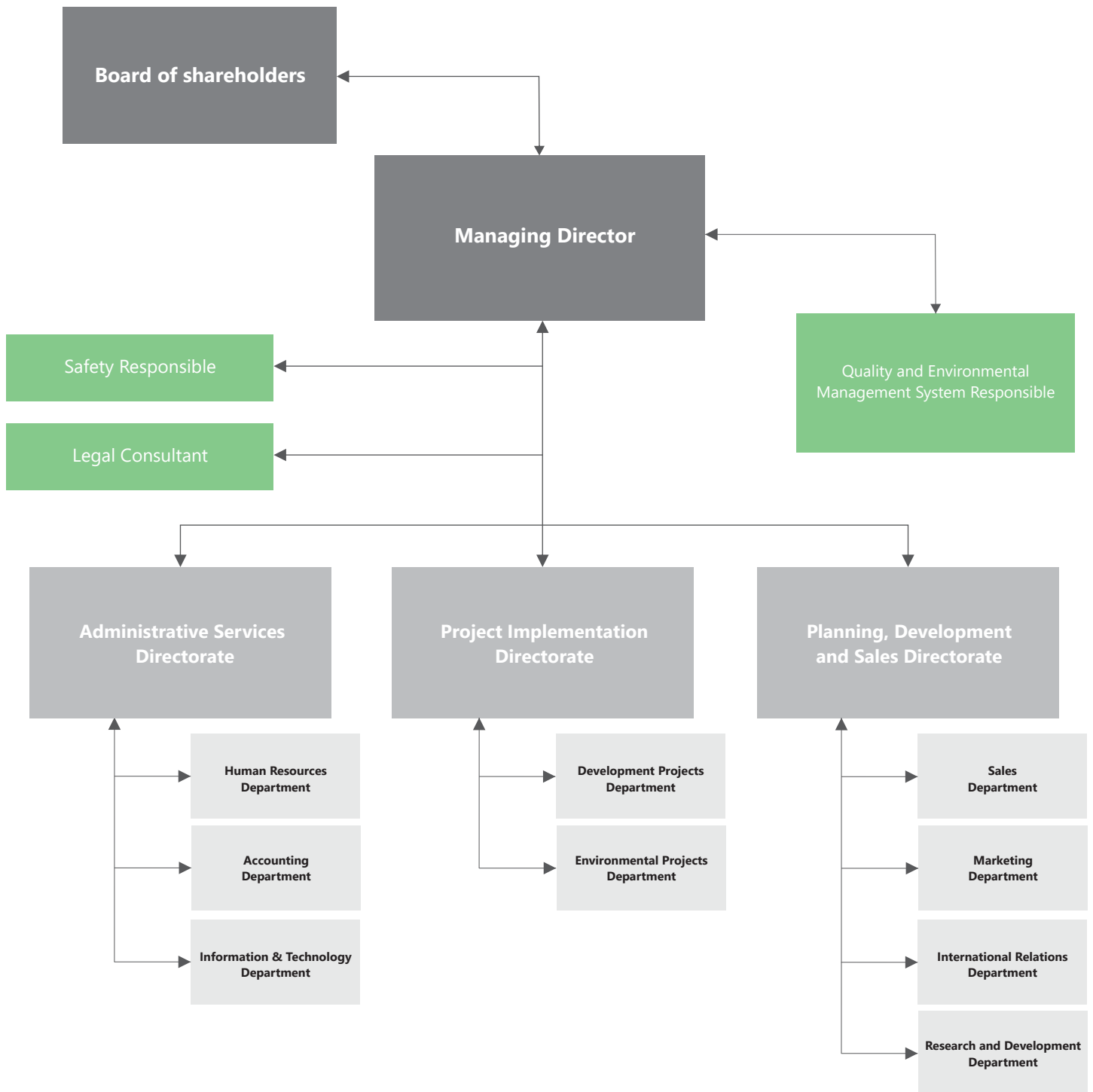


Headquarters in Athens,  
Representative Office in Brussels  
and physical presence in Cyprus

Physical presence in Corfu



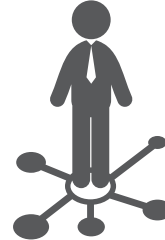
# Organization



# Key Characteristics

## Flexibility

We fully understand the changing nature of the consulting services sector. In this context, and in order to successfully complete our projects, our company and its staff are characterized by great **flexibility** and **adaptability** to these new circumstances, taking immediate and timely decisions and updating their action plans, whenever necessary.



## Trust



Our priority is to build a relationship of trust with our clients, paying particular attention to the direct, timely and effective communication. The aim is to strengthen the sense of **trust**, security and confidence towards our company and our staff. Our customers goals, are also our goals.

## Quality of services

We guarantee the timely and accurate delivery of the services we offer. The balanced way of working-living, the homogeneity of our staff and the methodic way of inter-operation between our departments are key company features which contribute to the **high quality** of our services.





# Projects



Energy & Climate Change  
LIFE+ - Adapt2change - € 2,5 M

**100% success rate** in project **implementation**



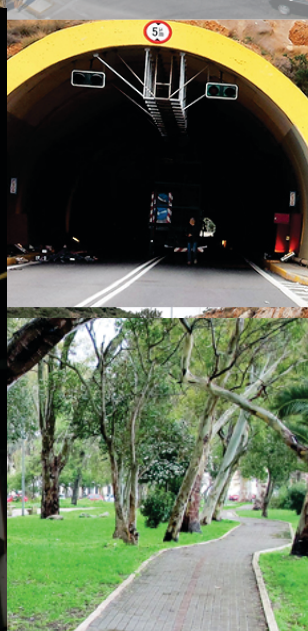
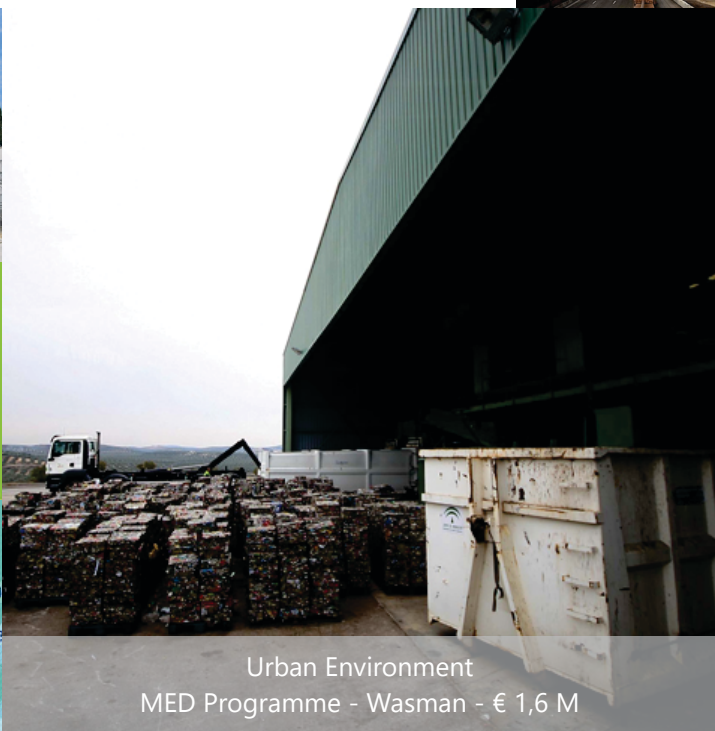
Implementation of **more than 200** studies, reports and deliverables



Maritime & Ports  
IPA Adriatic - Easyconnecting - € 7,8 M



Urban Environment  
MED Programme - Wasman - € 1,6 M



Participation in **more than 20** EU funded projects



# Quality and Environmental Management Policy

Our **policy** is based on the **sustainable development** of our activities while focusing on the **growth of our clients** and the **protection of the natural and social environment**, in order to **make the world better and inspire others to do the same**.

In this context, **quality and environmental management** is an inseparable part of all the **company's functions**, giving priority to issues related to the **protection of the physical and social environment**, with responsibility and sensitivity, as well as aiming to provide **timely, efficient and high quality services**, responding to all our clients' needs.

This commitment is part of our **social responsibility** and we believe that it contributes to the **maximization of the benefits** that arise from the operation of our company, for our **clients, employees, shareholders and final beneficiaries**.

We implement our commitment by applying the **principles of prevention and protection**, the **transparency and publication** of our actions, the further development and **optimization of our operations**, the **satisfaction** of our clients and the continuous **improvement** of our performance in a justified manner, protecting and having the environment as a direct part of our activities.

For this purpose, the Company has designed and applies a certified dynamic, comprehensive, **Integrated Quality and Environmental Management System** and has established a responsible and accountable person for the management of this System with organizational independence and jurisdiction to ensure that the System is applied, by taking appropriate corrective actions whenever this is necessary.

In this context, Living Prospects Ltd is **ISO 9001:2015-certified** Quality Management Systems, and **ISO 14001:2015-certified** Environmental Management Systems, by **LLOYD'S REGISTER LRQA**.



Our **administration provides** its **support and resources**, and focuses on this certified Integrated Quality and Environmental Management System, in consultation with its staff, and **commits to apply its commitments**, in order to **achieve its objectives** and to inform clients, employees and shareholders for the development of its



# Indicative Clients

EUROPEAN UNION



Committee of the Regions



UNEP  
United Nations  
Environment Programme



MWH®



MUNICIPALITY of CORFU



Inspiring a **BETTER** world

Follow us:



**Headquarters**

Kosti Palama 46

Athens, Dafni, 17237

Tel. & Fax: +30 210 38 00 750

Tel. & Fax: +30 215 56 00 440

Website: [www.livingprospects.gr](http://www.livingprospects.gr)

e-mail: [info@livingprospects.gr](mailto:info@livingprospects.gr)

**Representative Office**

Rue du Commerce 123

Suite 210

Belgium, Brussels, 1000

Tel.: +32 2 8955880



Inspiring a **BETTER** world

Since 2007 we assist various types of **private and public** organisations in **designing, implementing, and assessing** green economy projects, with a particular focus on **urban, coastal (including tourism-related), industrial and agricultural** development initiatives. In doing so, we have developed significant capacities in effectively **attracting, managing, and leveraging** European Union and other donor **funds**, in assisting various authorities and Funds in project proposal evaluation and selection processes, as well as in providing policy and technical expertise to Ministries, sub-national level authorities and institutions, and private organizations. Over the years, we have developed strong competencies in **designing and facilitating** the implementation of environmental **policies** at both the national and sub-national levels. We have also acquired significant experience in **Urban and Maritime Planning**.



#### Headquarters

Kosti Palama 46  
Greece, Athens, Dafni, 17237  
Tel. & Fax: +30 210 38 00 750  
Tel. & Fax: +30 215 56 00 440  
Website: [www.livingprospects.gr](http://www.livingprospects.gr)  
e-mail: [info@livingprospects.gr](mailto:info@livingprospects.gr)

#### Representative Office

Rue du Commerce 123  
Suite 210  
Belgium Brussels, 1000  
Tel.: +32 2 8955880



The company is **ISO 9001:2015-certified** Quality Management Systems, and **ISO 14001:2015-certified** Environmental Management Systems, by **LLOYD'S REGISTER LRQA**.

Follow us:

